

# ARTIFICIAL INTELLIGENCE (AI) TECHNOLOGY



**MERCER ONLINE**  
Mercer County Community College



**MERCER**  
COUNTY COMMUNITY COLLEGE



# ARTIFICIAL INTELLIGENCE (AI) TECHNOLOGY



Artificial intelligence (AI) technology is advancing more rapidly than ever before, especially in the areas of language generation and image generation. A tool with unprecedented capabilities and implications, ChatGPT, has been made available to the public. With their latest release of GPT 4 and other AI technology like Microsoft's Bing AI, MS CoPilot, and Google Bard. Mercer must continue its discussion and policy-making on the usage of AI and the potential effects such tools may have on a student's education.



# WHAT TOOLS ARE AVAILABLE FOR FACULTY?



There are a few tools available that higher education faculty can use to detect instances of AI or ChatGPT:

## AI Detectors:

There are online AI detectors that can detect instances of AI or machine-generated content. These detectors use algorithms to analyze patterns and identify content that is generated by a machine.

## Plagiarism Detection Software:

Plagiarism detection software can also be used to detect instances of AI-generated content that may be plagiarized. These tools compare the text of the content to a large database of existing content to check for similarities.





# AI DETECTORS:



- **OPENAI: [HTTPS://PLATFORM.OPENAI.COM/AI-TEXT-CLASSIFIER](https://platform.openai.com/ai-text-classifier)**
- **WRITER AI CONTENT DETECTOR: [HTTPS://WRITER.COM/AI-CONTENT-DETECTOR/](https://writer.com/ai-content-detector/)**
- **"BOTOMETER". [HTTPS://BOTOMETER.IUNI.IU.EDU/](https://botometer.iuni.iu.edu/)**
- **CHAT GPT-2 DETECTOR. [HTTPS://OPENAI-OPENAI-DETECTOR.HF.SPACE/](https://openai-openai-detector.hf.space/)**
- **GPTZERO: [HTTPS://GPTZERO.ME/](https://gptzero.me/)**





# PLAGIARISM DETECTION SOFTWARE:



- **SAFEASSIGN**
- **TURNITIN**
- **GRAMMARLY**
- **PLAGIARISM CHECKER X**
- **UNICHECK**
- **COPYLEAKS**
- **PLAGIARISM CHECKER**

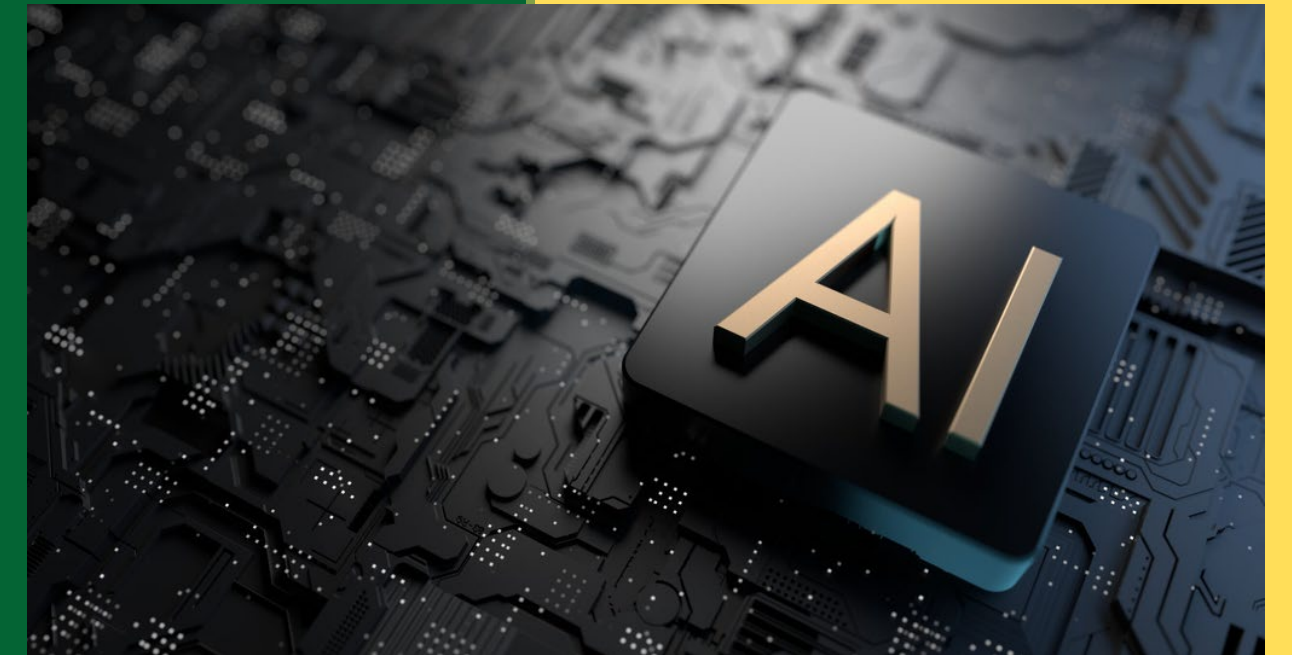


# WHAT IS BLACKBOARD'S RESPONSE TO SAFEASSIGN AND AI/CHAT GPT?

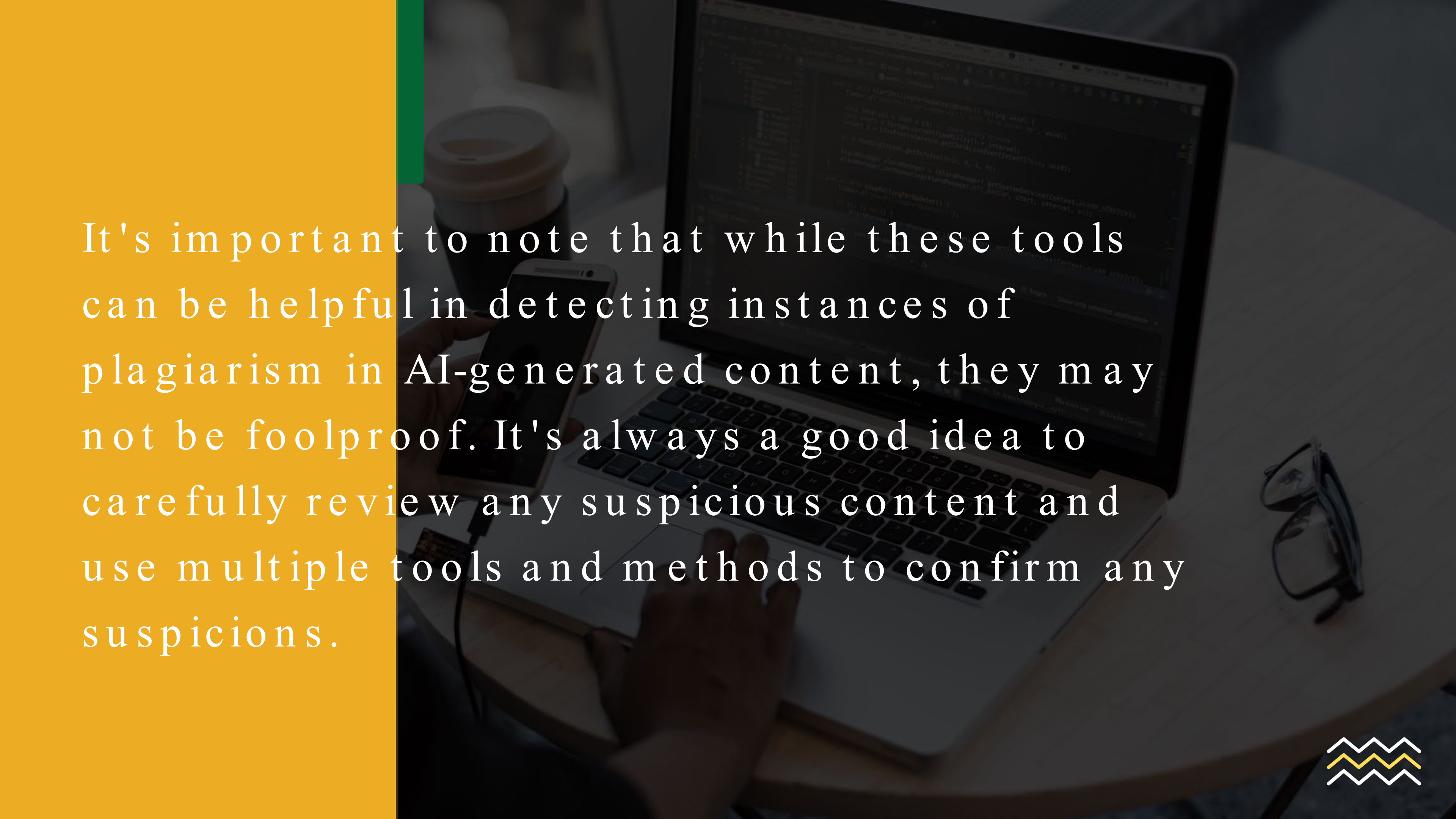
Bb has entered into an agreement with GPTZero to be part of a beta. This beta will give instructors access to indicators about the likelihood that content may have academic integrity concerns caused by generative AI use. They have asked for clients to sign-up for beta testing. I have added us to the list. Depending on how well the beta performs. This will be a solution from Bb moving forward.

Information on the beta can be found at:

<https://community.anthology.com/blogs/8/1179>



# Bb

A person is working at a desk. In the foreground, a hand holds a smartphone. A laptop is open in front of them, displaying code on its screen. To the left of the laptop is a coffee cup. To the right, a pair of glasses is on the desk. The background is slightly blurred, showing a desk lamp and other office items. The overall scene is dimly lit, with the laptop screen providing a primary light source.

It's important to note that while these tools can be helpful in detecting instances of plagiarism in AI-generated content, they may not be foolproof. It's always a good idea to carefully review any suspicious content and use multiple tools and methods to confirm any suspicions.





**MERCER ONLINE**  
Mercer County Community College

**THANK YOU!!**



**MERCER**  
COUNTY COMMUNITY COLLEGE